

0614005

98

PET. 6/14-013  
ALOC. #0001 (used up)  
NO SCHOOLS D  
5/3/3/K

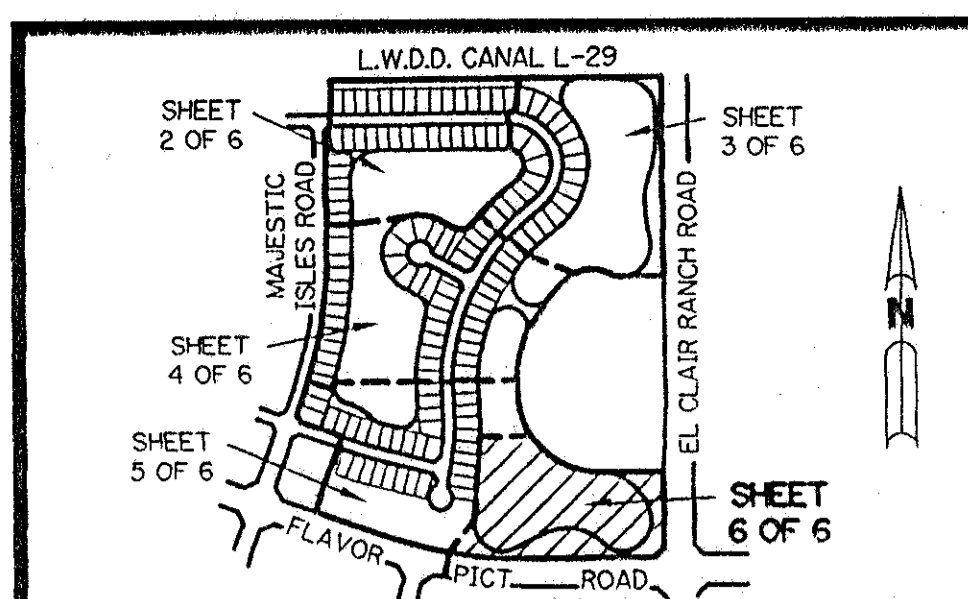
# PLAT OF CORAL LAKES IV

BEING A REPLAT OF A PORTION OF TRACT "A" OF THE  
PLAT OF CORAL LAKES AS RECORDED IN PLAT BOOK 67, PAGES 197-198,  
LYING IN SECTION 3, TOWNSHIP 46 SOUTH, RANGE 42 EAST,  
PALM BEACH COUNTY, FLORIDA

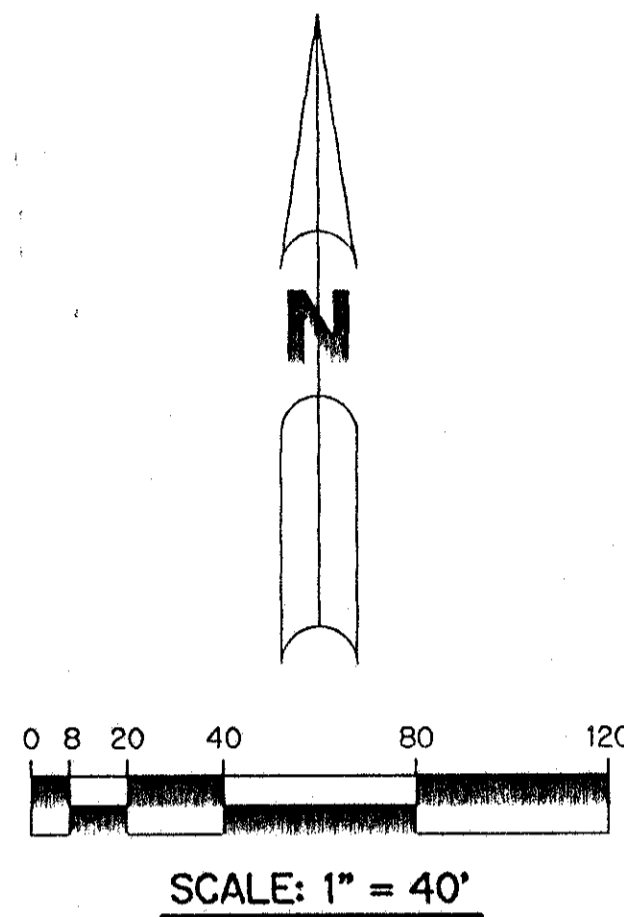
APRIL, 1993

SHEET 6 OF 6

THIS INSTRUMENT PREPARED BY  
PERRY C. WHITE P.L.S. 4213 STATE OF FLORIDA  
LAWSON, NOBLE AND ASSOCIATES, INC.  
ENGINEERS PLANNERS SURVEYORS  
WEST PALM BEACH, FLORIDA

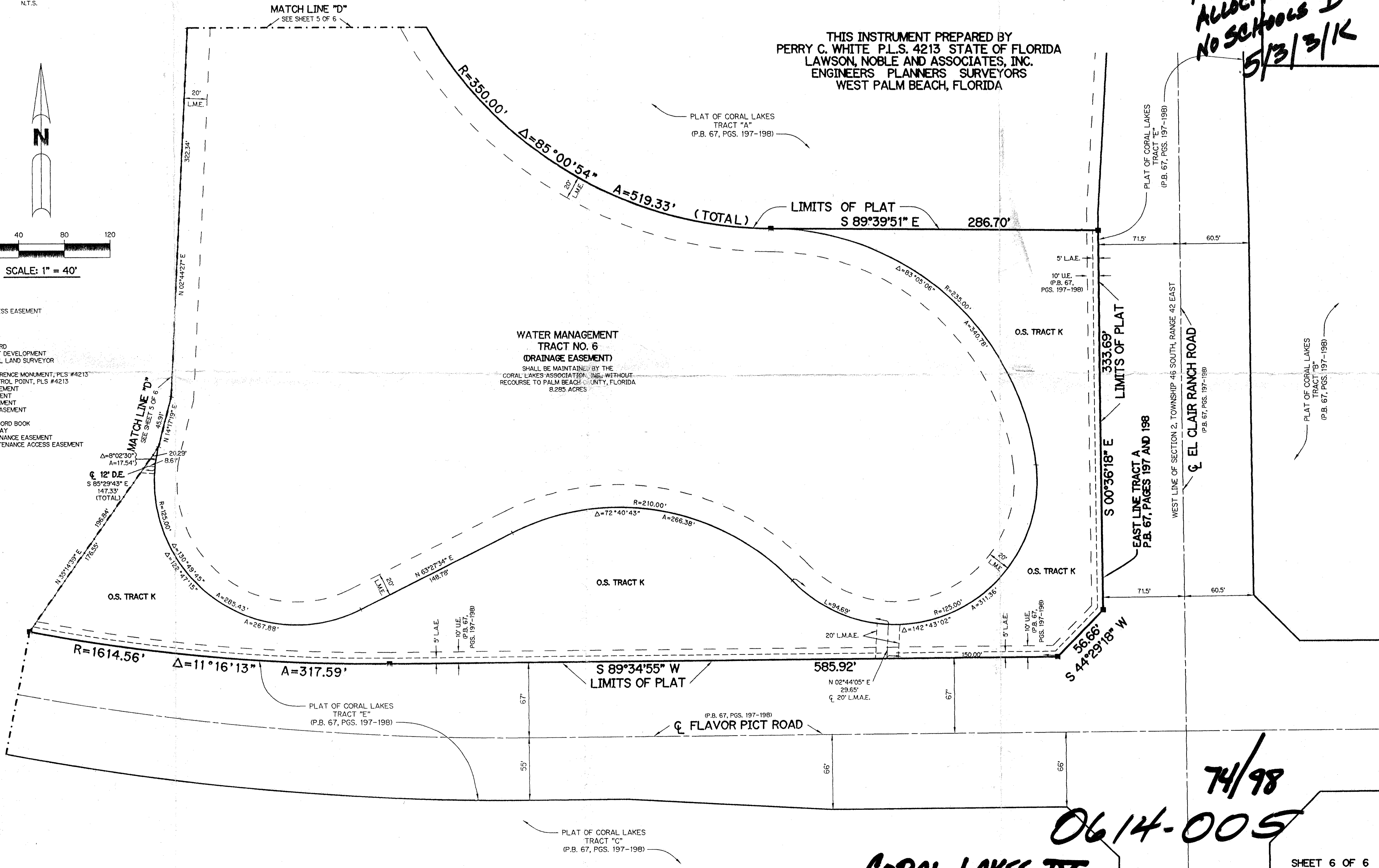


KEY MAP  
N.T.S.



### LEGEND

- L.A.E. - LIMITED ACCESS EASEMENT
- R - RADIUS
- Δ - DELTA ANGLE
- P.B. - PLAT BOOK
- P.G.S. - PAGES
- O.R. - OFFICIAL RECORD
- P.U.D. - PLANNED UNIT DEVELOPMENT
- P.L.S. - PROFESSIONAL LAND SURVEYOR
- N.R. - NOT RADIAL
- PM - PERMANENT REFERENCE MONUMENT, PLS #4213
- PC - PERMANENT CONTROL POINT, PLS #4213
- O.E. - OVERHANG EASEMENT
- U.E. - UTILITY EASEMENT
- D.E. - DRAINAGE EASEMENT
- F.E. - FLOOD PLAIN EASEMENT
- O.S. - OPEN SPACE
- O.R.B. - OFFICIAL RECORD BOOK
- R.O.W. - RIGHT-OF-WAY
- L.M.E. - LAKE MAINTENANCE EASEMENT
- L.M.A.E. - LAKE MAINTENANCE ACCESS EASEMENT



WATER MANAGEMENT  
TRACT NO. 6  
(DRAINAGE EASEMENT)  
SHALL BE MAINTAINED BY THE  
CORAL LAKES ASSOCIATION, INC. WITHOUT  
RECOURSE TO PALM BEACH COUNTY, FLORIDA  
8.285 ACRES

TAZ-456

SUBDIVISION \* Coral Lakes IV  
BOOK 74  
PAGE 98  
FLOOD ZONE B  
QUAD #36  
SE  
PLAT NAME SAME  
ZIP CODE 33437

74/98  
0614-005

CORAL LAKES IV